



Owner's Manual

1500 Series BAT® Media Plants

PLANT MODELS

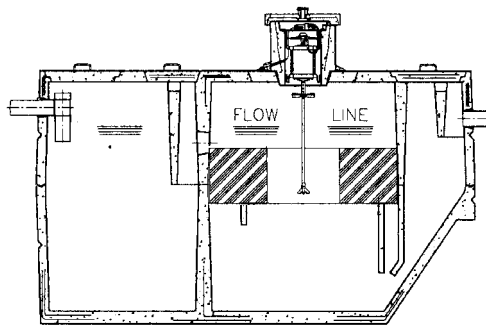
Jet Media Plants are available in six sizes – 500, 600, 750, 1000, 1250 & 1500 gpd (“gpd” means “gallons per day” and refers to the way wastewater treatment plants are rated).

Plants in the J-1500 Series have been tested and meet NSF Standard 40 criteria for a Class I NSF Listing.

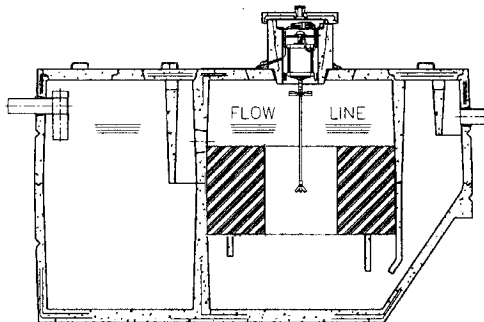
Most 500 through 750 gpd plants serve single family dwellings. Larger plants normally serve other buildings.

500, 600 & 750 GPD PLANTS

All information in this manual is directed to owners of plants in these sizes. The exception is the section directed to owners of 1000 through 1500 gpd plants.



500 GPD PLANT



600 AND 750 GPD PLANTS

BAT® PROCESS

Your plant uses Jet’s exclusive wastewater treatment process called Biologically Accelerated Treatment, or BAT® for short.

In this process, millions of microorganisms attach themselves to the media. The Jet Aerator supplies the oxygen utilized by the microorganisms to convert the waste to colorless, odorless liquids and gases. This process provides an extraordinarily high degree of treatment.

CONTENTS

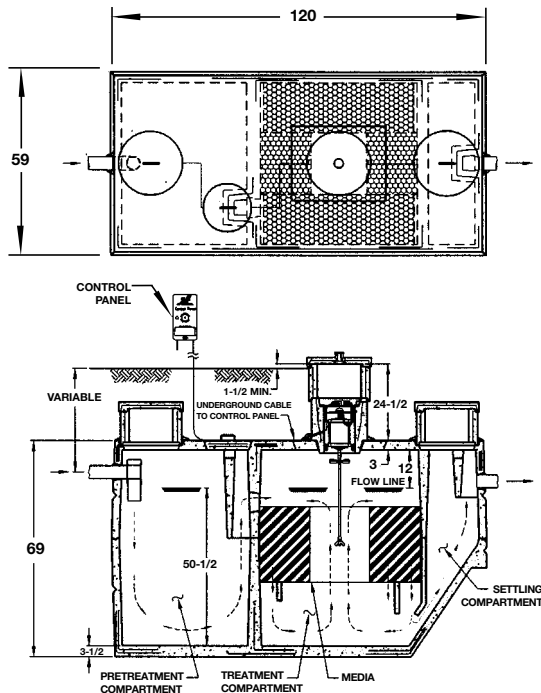
PLANT MODELS	1
500, 600 & 750 GPD PLANTS	1
BAT® PROCESS	1
JET TANK.....	2
500 THROUGH 1500 GPD PLANTS	2
JET AERATOR	2
CONTROL PANEL.....	3
JET-CHLOR® CHLORINATION	3
CHLOR-AWAY® DECHLORINATION	3
BIO JET-7®.....	4
INSPECTION & SERVICE.....	4
Local Distributor	
Limited Warranty & Service Policy	
Renew Your Inspection & Service Policy	
Service Intervals	
DOs & DON'Ts	5
Avoid These Items	
Plant Landscaping	
Vacations & Intermittent Use	
AVOID COSTLY REPAIRS	5
WARRANTY.....	6

JET TANK

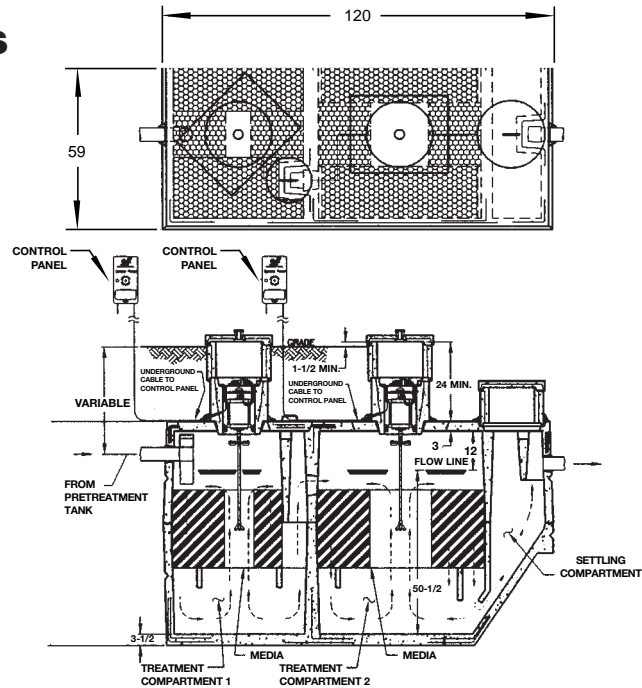
The tank has three compartments. Arrows on the diagram indicate the flow direction. The Pretreatment Compartment, on the left, receives wastewater and treats it physically and biologically. The Jet Aerator provides mixing and injects fresh air into the Treatment Compartment contents.

The wastewater flows through the plant, receiving treatment as it travels to the Settling Compartment. Here, fine particles settle and return to the Treatment Compartment, for further processing, leaving only a clear, odorless liquid for final discharge.

500 THROUGH 1500 GPD PLANTS



500 THROUGH 750 GPD PLANTS
600 GPD SHOWN AS REPRESENTATIVE



1000 THROUGH 1500 GPD PLANTS
1500 GPD SHOWN AS REPRESENTATIVE

PRETREATMENT TANK
EITHER JET TANK
ABOVE OR ANY
1000 GALLON SEPTIC
TANK ARE ACCEPTABLE
FOR PRETREATMENT

JET AERATOR

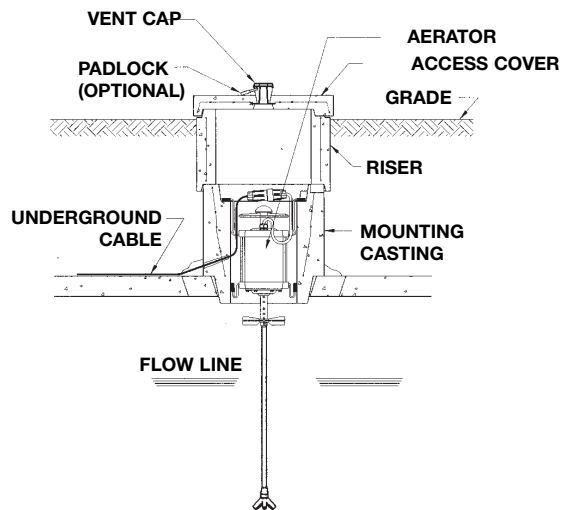
The aerator is the only mechanical component in your plant. It requires no owner maintenance.

Fresh, outside air is drawn into the Treatment Compartment by the aerator. Air travels down the mounting casting cover air vent through the aerator and into the tank, providing oxygen for the treatment process. Any foam is controlled by the foam restrictor.

Aerator operation is virtually silent. If the plant is located near an open window, you may detect the sound of air moving

into the treatment tank. For absolutely silent operation, please ask your Jet Distributor to install an Aerator Silencer.

Jet has a Standard and a Flood proof aerator. The Flood proof model is sealed to protect it from damage by water. It is not designed to operate under water. If a high water level occurs, the control panel circuit breaker will open, shutting off power to the aerator. The warning light will turn "on". If this happens, press the circuit breaker reset button on the control panel to restart the aerator.



- Never handle your aerator. Call your Jet Distributor if any service is necessary.
- When the Aerator Access Cover is removed and reinstalled, it is important to place the Outside Air Hose in the vent cap. The hose must not be obstructed.
- Never disassemble or work on the aerator. This voids the Warranty.
- Power at the main electrical panel must be turned off before any authorized service is performed on the aerator, the control panel or any wiring.

CONTROL PANEL

The control panel may be set to provide cycled or non-cycled treatment, depending upon local regulations. Jet offers different control panel models that meet requirements in all areas.

The time cycle was set by an authorized service technician to conform to local regulations. Do not change this setting.

The control panel should be mounted where it can be easily accessed and seen. A wiring diagram and instructions are inside the control panel cover. Energy requirements are 115 Volt, 60 Hz. Electrical work must be performed in accordance with the requirements of the National Electrical Codes and local codes.

If the red visual alert light glows and/or an audible alert buzzer sounds, the circuit breaker has opened to protect the aerator. To restart the aerator, press the circuit breaker reset button. If the breaker does not stay "set", causing the light and/or buzzer to repeatedly operate, contact your Jet Distributor.

Your control panel may have an audible alert buzzer. It sounds when the circuit breaker trips. Also, the red visual alert light goes "ON." Both buzzer and alert light can be turned off by pressing the control panel circuit breaker reset button. Normally, this will restart the aerator.

If the buzzer and alert light come on repeatedly, turn the switch in the control panel to "OFF" and immediately call your Jet Distributor to service.

JET-CHLOR® CHLORINATION

Your plant may be equipped with a JET-CHLOR® Tablet Chlorinator. It is installed on the plant discharge line.

If you have a chlorinator, read the "Installation and Operation" manual. This gives instructions for easy operation and maintenance.

We strongly recommend you use only JET-CHLOR® Tablets. They are EPA approved while many others are not. See your local dealer or write Jet Inc. to purchase JET-CHLOR® and to receive additional information.

CHLOR-AWAY® DECHLORINATION

If you have a chlorinator, your plant may be equipped with the Jet Dechlorinator. This is installed after the chlorinator on the discharge line.

We strongly recommend that you use only CHLOR-AWAY® Tablets in your dechlorinator. Our tablets are highly effective and cost efficient. See your local dealer or write Jet Inc. to purchase CHLOR-AWAY® and to receive additional information.

BIO JET-7®

- BIO JET-7® is a natural, organic, non-toxic liquid that gets new plants and plants that have just completed their 3-year service off to a running start. When used as directed, BIO JET-7® prevents grease traps from clogging and eliminates septic tank odors. It really works!
- If your neighbors have a smelly septic tank, suggest they get a bottle of BIO JET-7®. It is their first line of defense for dealing with their septic odor problems.
- Periodic application of BIO JET-7® and following the recommended plant maintenance will keep your plant running in top form.
- Your Jet Plant should have an Inspection/Service call by your distributor every 6 months. A bottle of BIO JET-7® should be used following this call. See your local dealer or write Jet Inc. to purchase BIO JET-7® and to receive additional information.

INSPECTION & SERVICE

LOCAL DISTRIBUTOR

The local Jet Distributor who installed your Jet Plant is trained, experienced and properly equipped to handle service and answer any questions. Your distributor's name and phone number are posted on the cover of your control panel.

LIMITED WARRANTY & SERVICE POLICY

Your Limited Warranty and Inspection/Service Policy are printed on a card accompanying this manual.

RENEW YOUR INSPECTION/SERVICE POLICY

For the first two years, your Jet Distributor provides free inspection and service. This Inspection/Service Policy includes repair, service and maintenance calls at no charge. After the first two years, renew your Inspection/Service Policy with your Jet Distributor. Virtually all health departments require that this policy be kept continuously in force.

SERVICE INTERVALS

6-Month Service: This comprehensive service call includes collection and assessment of a post-treatment sample, removal, inspection, servicing, cleaning, reinstallation and testing of the aerator by a trained serviceman.

12-Month Service: This call provides all elements of the 6-Month Service as well as media cleaning.

3-Year Service: This service provides all steps in the 6- and 12-month service and tank pumping. If you have not renewed your Inspection/Service Policy, you will be charged for the 30- and 36-month service calls. Tank pumping is not included under your Jet Distributor's Inspection/Service Policy. It is charged to you by your tank pumper. If you have kept your service policy in force, there will be no charge for aerator service.

PLANT SERVICE – 3 Year Cycle						
Service	Months					
	6	12	18	24	30	36
6-Month Inspection/Service	●	●	●	●	●	●
12-Month Inspection/Service		●		●		●
3-Year Service						●

DOs & DON'Ts

AVOID THESE ITEMS

Do not put any of the following items in your plant or sewage system. **They will cause serious damage** to the plant biological process and equipment.

1. Plastic, sanitary napkins, scouring pads, condoms, mop strings, "disposable" diapers, towels, lint, rags, etc. These items should be disposed with household refuse. Wrap in paper if necessary.
2. Paints, thinners, chemicals, grease, solvents and sanitizers. Place in a container such as a milk carton. To solidify, use cat litter or other absorbent material.
3. Water softener backwash. Route to drainage ditch, storm sewer or downspout drainage system.
4. Plumbing cleaners. Avoid using these products.

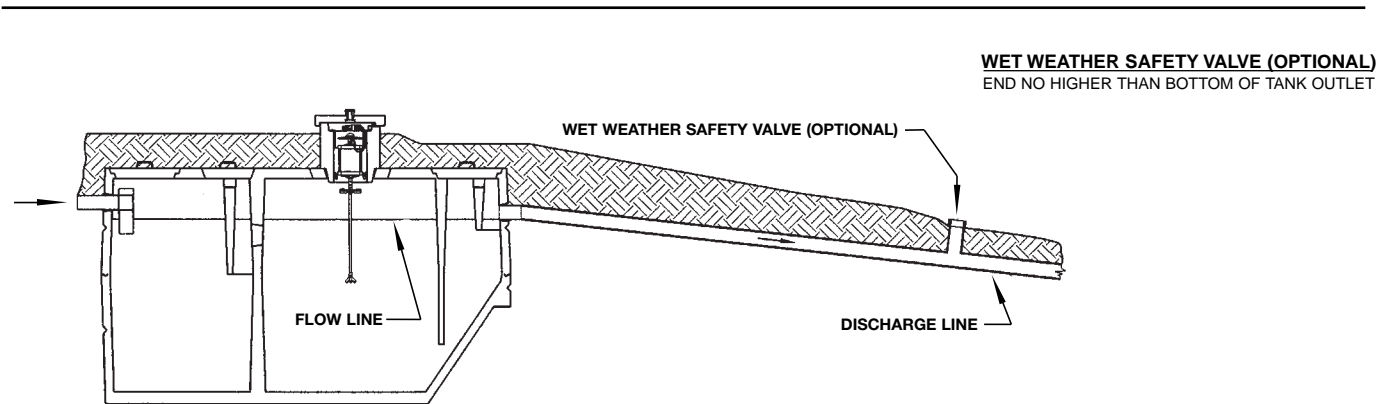
PLANT LANDSCAPING

Most owners plant grass over their Jet Plant. Myrtle, pachysandra or shrubbery is also attractive. Many owners prefer planting a flower bed. Do not position anything permanently over below-grade access covers. They must be accessible for service. (See drawings on page 2.)

It is very important that the finished grade slope away from the plant. Also, grade must be at least 1" below the bottom of the manhole covers.

VACATIONS & INTERMITTENT USE

If your plant serves a vacation home or a building in which all occupants will be absent part of the time, the plant should be left running and cycled as it is during any absences. This will clean the Treatment Compartment during the absence and keep the plant in top operating condition.



AVOID COSTLY REPAIRS

Water damage, the most common cause of aerator repairs, occurs when the water level in the tank rises to a point where it contacts the aerator. It occurs most frequently when there is a blockage of the tank outlet.

Water damage, caused by outlet blockage, can be prevented by installation of an optional "Wet Weather Safety Valve". (See drawing above). If the discharge point becomes clogged, water backs up into the tank and can flood the building

that it serves. When a "Wet Weather Safety Valve" is installed, excess water flows out of it, protecting your aerator and tank and saving you service and repair costs. Ask your Installation Contractor if a "Wet Weather Safety Valve" is needed for your property.

Three Important points are: **1)** The lawn around your plant must be graded away from the plant. This is extremely important! **2)** Keep the final outlet of your plant's discharge line open and clear. Ask your Jet Distributor to show you where the final outlet is. **3)** Keep your "Wet Weather Safety Valve" open and clear.

30 Month Limited Warranty

JET Inc. warrants every new JET product against defective materials and workmanship, under normal service, for 30 months commencing (i) on the date of original installation if a complete warranty card is returned to JET Inc. (a) within 20 days from the date of installation or (b) within 20 days after the original purchaser moves into the building or home serviced by the aerator or (ii) on the date of shipment from the factory if no warranty card is returned within the time period described above.

To make a claim under this warranty notify your JET Distributor. All products covered under the warranty must be returned to the factory by a JET Distributor. JET Inc., at its option, may elect to repair or replace the product, or refund the purchase price of the product. JET Inc. will provide the appropriate remedy within 60 days after confirming that the claim is covered by the warranty. Jet Inc. reserves the right to replace the product with a product of comparable quality and does not guarantee that it will match the original product. If any warranty repair is needed, it will be made at the factory. The owner shall assume all responsibility for freight charges to and from the factory. If there are missing parts, an additional charge will be made.

If there is any in-warranty media repair or replacement, this will be taken care of by the JET Distributor at the installation, with no charge for labor or materials. Media damage caused by owners or unauthorized persons is not covered by this warranty.

The warranty does not cover any JET product damaged by high water or flooding. In addition, this warranty does not cover any JET products (i) damaged due to disassembly by unauthorized persons, improper installation, misuse, or lightning, (ii) subjected to external damage, (iii) damaged due to improper or altered wiring or overload protection (iv) damaged by failure to follow the

instructions in the Owner's Manual or failure to maintain a service policy after the free, initial, service policy expires. This warranty applies to all JET products made by and bearing the name JET Inc. It does not include products of other companies or any of the building or home wiring, plumbing, drainage, or any other part of the disposal system.

JET INC. SHALL NOT BE RESPONSIBLE FOR ANY INCIDENTAL, CONSEQUENTIAL OR PUNITIVE DAMAGE CAUSED BY DEFECTIVE COMPONENTS OR MATERIALS OR FOR ANY LOSS INCURRED BECAUSE OF THE INTERRUPTION OF SERVICE, OR ANY OTHER SPECIAL CONSEQUENTIAL, OR INCIDENTAL DAMAGES OR EXPENSES ARISING FROM THE MANUFACTURE, SALE, USE OR MISUSE OF ANY JET PRODUCTS COVERED HEREUNDER. THIS WARRANTY IS IN LIEU OF ALL OTHER EXPRESS WARRANTIES. ANY WARRANTY IMPLIED BY LAW, INCLUDING IMPLIED WARRANTIES OF MERCHANTABILITY OR FITNESS FOR A PARTICULAR PURPOSE (IF APPLICABLE), IS IN EFFECT ONLY FOR THE WARRANTY PERIOD SPECIFIED ABOVE. (SOME STATES DO NOT ALLOW EXCLUSIONS OR LIMITATIONS OF INCIDENTAL OR CONSEQUENTIAL DAMAGES SO THE ABOVE LIMITATIONS MAY NOT APPLY TO YOU.) **SOME STATES DO NOT ALLOW LIMITATIONS OF HOW LONG AN IMPLIED WARRANTY LASTS, SO THE ABOVE LIMITATIONS MAY NOT APPLY TO YOU.**

JET Inc. reserves the right to revise, change, or modify the construction and design of any and all JET products or any component part or parts thereof, without incurring any obligation to make such changes or modifications in present equipment. This warranty gives you specific legal rights, and you may also have other rights which vary from state to state.

JET Inc. • 750 Alpha Dr. • Cleveland, Ohio 44143 USA • 440.461.2000

